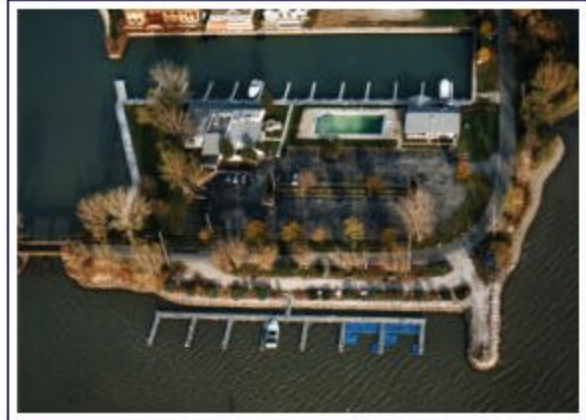


PIBYC Cruise-Out Information:

NOR' EASTER CLUB

Sunday Dinner, June 26, 2005



- Arrive at 5:00 p.m. by boat or car.
- Dockage is limited to about five (5) boats.
 - Those who normally dock in the Catawba, Port Clinton, and Sandusky area are asked to travel by car.
 - Boats leaving from and returning to Put-in-Bay have extra room to take passengers.
 - No electric hook up is available.
- Cash bar open prior to dinner.
- Dinner will be served in the porch dining room at 6:00 p.m.
- Menu will be ribs, chicken, beans, potato salad, and dessert.
- Cost per person is \$18 (pay PIBYC).

Directions:

Take Route 53 to Catawba Island (north from Route 2, or south from Miller ferry dock). At the sign for the Nor'Easter Club, turn East onto North Harbor Causeway. Continue down to the boat area, veer to the right, and cross the causeway. The Club is on the left just after crossing the bridge. See more information about the Nor'Easter Club at www.noreasterclub.com.

Contact Information:

Bob Bahney III, PIBYC Vice Commodore
740-642-4041 (home) 614-203-7322 (cell)
webskipper@pibyc.org

Skip Hermes,
Nor'Easter General Manager
419-797-4466